



TECHNICAL INFORMATION AND SERVICES

MAIN THEATER, STUDIO CLASSROOM,
& LITTLE THEATER

2102 EAST FIRST STREET
LOS ANGELES, CA 90033
WWW.CASA0101.ORG
323.263.7684

MISSION STATEMENT

CASA 0101 is dedicated to providing vital arts, cultural, and educational programs — in theater, digital filmmaking, art and dance — to Boyle Heights, thereby nurturing the future storytellers of Los Angeles who will someday transform the world.

GENERAL INFORMATION:

Administration Phone.....323.263.7684
Box Office Phone323.263.7684
Websitewww.casa0101.org
E-mailinfo@casa0101.org
Address2102 E. 1st Street
Los Angeles, CA 90033

THEATER STAFF:

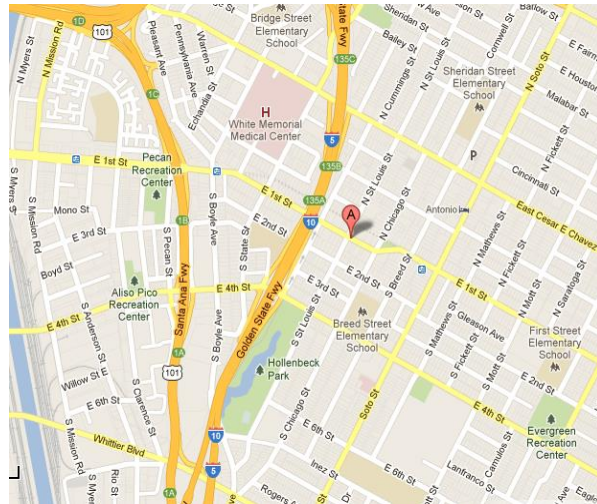
ARTISTIC DIRECTOR
Josefina Lopez
323.263.7684

EXECUTIVE DIRECTOR
Emmanuel Deleage
323.263.7684 EXT. 1003
Emmanuel@casa0101.org

EXECUTIVE ADMINISTRATOR
Mark Kraus
323.263.7684 EXT. 1004
Mark@casa0101.org

TECHNICAL DIRECTOR
Sohail e. Najafi
323.263.7684 EXT. 1005
Sohail@casa0101.org

FACILITIES MANAGER
Vincent Sanchez
323.263.7684 EXT. 1005
Vincent@casa0101.org



THEATER OVERVIEW:

CASA 0101 BOASTS A FULL ARTS COMPLEX FEATURING A STATE OF THE ART 99-SEAT BLACK BOX THEATER, A FORMAL ART GALLERY, AND A CONVERTIBLE OPEN TO ENCLOSED STUDIO SPACE FOR CLASSES, STAGED READING, AND WORKSHOPS.

BOX OFFICE:

Phone: 323.263.7684
Hours: 11AM to 6PM Monday through Friday
Available 24 hours a day at:
www.casa0101.org/tickets



SERVICES

TICKETING

In house ticketing services are available at the client's expense. Please contact our Executive Administrator, Mark Kraus, at Mark@casa0101.org for more information.

FRONT OF HOUSE STAFFING

Casa 0101 can provide professional front of house personnel at the client's expense. Staff duties can include box office management, concessions, and patron services. Please contact our Executive Administrator, Mark Kraus, at Mark@casa0101.org for more information.

FOOD & BEVERAGE

Food and beverage services are not available directly through Casa 0101. Outside vendors are welcome, provided that arrangements are made in advance and in writing.

PARKING

Casa 0101 offers nearby parking at 2130 E. First Street, just behind the Boyle Heights City Hall. This parking lot is available upon request on Friday and Saturday evenings. Street parking is available directly surrounding the theater during weekdays and Sunday.

PRODUCTION AND STAGING

Production and staging at Casa 0101's Main Theater require the services of our skilled team of in-house personnel at the client's expense for the following: *lighting load-in/hang/focus/console programming/operation, sound load-in/playback programming/operation, and floor paint restoration.* **Please refer to the Rates section for more information.**

The following are allowed to be provided by the client: *scenic load-in.* **In special circumstances, clients may provide personnel for lighting/sound console programming/operation. This exception is made on a case by case basis.**



RENTAL RATES

MAIN THEATER REHEARSAL RENTAL BASE RATE

Rehearsal rentals are for Auditions, Rehearsals, or Meetings only.

WHAT'S INCLUDED

Studio rental includes use of stage, house, and theater worklights only.

BASE RATES

	Weekday Day (Mon-Fri 10am-6pm)	Weekend (Sat-Sun) & Evenings (6pm-11pm)
For-Profit Companies	\$40 per hour	\$40/hour; 4 hour minimum
Non-Profit Companies	\$35 per hour	\$35/hour; 4 hour minimum
Boyle Heights Based Non-Profit Companies	\$25 per hour	\$25/hour; 4 hour minimum

ADDITIONAL CHARGES

Projection on a 84" x 84" screen with one (1) operator for four (4) hours*	\$150
Projection on a 21' x 12' screen with one (1) operator for four (4) hours*	\$250

MAIN THEATER PRODUCTION RENTAL BASE RATE

Production rentals are for Theatrical Productions, Film Screenings and Shoots, and Special Events that necessitate production support and staging.

WHAT'S INCLUDED

Production rental includes use of lobby, gallery, stage, house, dressing rooms, theatrical repertory light plot and standard audio system. **Operators/Programmers are billed as an additional charge dependent on the scope of the rental.**

BASE RATES

	Weekday Day (Mon-Fri 10am-6pm)	Weekend (Sat-Sun) & Evenings (6pm-midnight)
For-Profit Companies	\$90 per hour	\$600/night(6pm-midnight)
Non-Profit Companies	\$80 per hour	\$550/night(6pm-midnight)
Boyle Heights Based Non-Profit Companies	\$70 per hour	\$500/night(6pm-midnight)

ADDITIONAL CHARGES

Projection on a 84" x 84" screen with one (1) operator for four (4) hours*	\$150
Projection on a 21' x 12' screen with one (1) operator for four (4) hours*	\$250
Lighting/Projection/Audio Operator (4 hour minimum)	\$25/hour
Lighting/Projection/Audio Programmer (4 hour minimum)	\$40/hour
Technical Director (4 hour minimum; REQUIRED for all load-ins and technical rehearsals)	\$40/hour

*QLab playback programming is available as an additional programmer charge.

ADDITIONAL MAIN THEATER RENTAL INFORMATION

- 50% of rental fee is due at time of booking.
- 50% remainder balance due upon start of rental.
- PAST MIDNIGHT:** Staff billed at double the standard rate + \$100/hr venue charge.
- Proof of Insurance for at least \$1 million liability required at time of booking.
- Insurance coverage through the theater is available at client's expense.
- Non-Profit Company Rates require submission and approval of a valid IRS 501c3 determination letter at the time of booking.

RENTAL RATES

LITTLE THEATER REHEARSAL RENTAL BASE RATE

Rehearsal rentals are for Auditions, Rehearsals, or Meetings only.

WHAT'S INCLUDED

Rehearsal rental includes use of stage, house, and worklights only.

BASE RATES

	Weekday Day (Mon-Fri 10am-6pm)	Weekend (Sat-Sun) & Evenings (6pm-11pm)
For-Profit Companies	\$30 per hour	\$35/hour; 4 hour minimum
Non-Profit Companies	\$25 per hour	\$30/hour; 4 hour minimum
Boyle Heights Based Non-Profit Companies	\$20 per hour	\$25/hour; 4 hour minimum

LITTLE THEATER PRODUCTION RENTAL BASE RATE

Production rentals are for Theatrical Productions, Film Screenings and Shoots, and Special Events that necessitate production support and staging.

WHAT'S INCLUDED

Production rental includes use of stage, house, dressing rooms, theatrical repertory light plot and standard audio system. **Operators/Programmers are billed as an additional charge dependent on the scope of the rental.**

BASE RATES

	Weekend (Sat-Sun) & Evenings (6pm-midnight)
For-Profit Companies	\$275/night(6pm-midnight)
Non-Profit Companies	\$250/night(6pm-midnight)
Boyle Heights Based Non-Profit Companies	\$225/night(6pm-midnight)

ADDITIONAL CHARGES

Lighting/Projection/Audio Operator (4 hour minimum)	\$25/hour
Lighting/Projection/Audio Programmer (4 hour minimum)	\$40/hour
Technical Director (4 hour minimum; may be required for load-in and technical rehearsals)	\$40/hour

*QLab playback programming is available as an additional programmer charge.

ADDITIONAL LITTLE THEATER RENTAL INFORMATION

- 50% of rental fee is due at time of booking.
- 50% remainder balance due upon start of rental.
- PAST MIDNIGHT:** Staff billed at double the standard rate + \$100/hr venue charge.
- Proof of Insurance for at least \$1 million liability required at time of booking.
- Insurance coverage through the theater is available at client's expense.
- Non-Profit Company Rates require submission and approval of a valid IRS 501c3 determination letter at the time of booking.

RENTAL RATES

STUDIO CLASSROOM RENTAL BASE RATE

WHAT'S INCLUDED

Studio rental includes use of enclosable studio and worklights only.

BASE RATES

	Weekday Day (Mon-Fri 10am-6pm)	Weekend (Sat-Sun) & Evenings (6pm-11pm)
For-Profit Companies	\$30 per hour	\$35/hour; 4 hour minimum
Non-Profit Companies	\$25 per hour	\$30/hour; 4 hour minimum
Boyle Heights Based Non-Profit Companies	\$20 per hour	\$25/hour; 4 hour minimum

ADDITIONAL CHARGES

Projection on a 84" x 84" screen with one (1) operator for four (4) hours* \$150

ADDITIONAL STUDIO CLASSROOM RENTAL INFORMATION

- 50% of rental fee is due at time of booking.
- 50% remainder balance due upon start of rental.
- PAST MIDNIGHT:** Staff billed at double the standard rate + \$100/hr venue charge.
- Non-Profit Company Rates require submission and approval of a valid IRS 501c3 determination letter at the time of booking.

PRODUCTION INFORMATION

FRONT OF HOUSE

AUDIENCE LOBBY

Occupancy.....150 (432 square feet)
Amenities.....Full architectural lighting system; Concessions area with serving bar, refrigerator, sink, and Keurig single serve coffee machine; Central Air Heating and Cooling; Audio monitor system with local volume controls for stage audio, audio playback, and patron public announcement

ART GALLERY

Occupancy.....150 (481 square feet)
Amenities.....Gallery lighting system; Central Air Heating and Cooling; Audio monitor system with local volume controls for stage audio, audio playback, and patron public announcement

ENCLOSEABLE STUDIO/CLASSROOM SPACE

Dimensions.....18'-4" by 22'-3" (408 square feet)
Amenities.....Enclosable space featuring temporary air walls; Architectural lighting system; Central Air Heating and Cooling; Dance mirror wall; Dead hung pipe grid; Pre-wired with DMX and house power distributions for basic theatrical lighting load-ins with client provided equipment



MAIN THEATER PRODUCTION INFORMATION

STAGE HOUSE

HOUSE CURTAIN

None available in inventory, but our Technical Director can arrange rental and load-in at the client's expense.

RIGGING

Type.....Dead-hung pipe grid
Trim Height.....14 ½' above the stage floor

STAGE FLOOR

Type.....Sprung wood floor
Stage Width31'-3"
Stage Depth to US Traveler.....20'-5"
Stage Depth to US Wall.....28'-5"

HOUSE

Type.....Removable Stadium Seating
Number of seats.....99 seats (maximum 120 seats)
Seating Rake45-degree rake from stage floor
House Depth-Plaster Line to Back wall.....22'-8"
First row to Plaster Line.....5'

HVAC

Central Air Heating and Cooling available throughout stage and house

CONTROLLED ACCESS

Technical Booth, Properties Storage, and Technical Storage all secured with electronic pin-code locks for controlled access for clients and staff.

BACKSTAGE

LOADING DOCK

A single bay loading dock for active loading/unloading is available upon request.

Allowable truck length.....up to 26'
Loading bay opening width.....6'-8"
Loading door size..... 5'-10" (double door)
Distance from dock to stage..... approx. 20'

DRESSING ROOMS

Number available.....Two (2) located offstage right at stage level
Amenities.....Vanity Mirror/Lighting, Individual Full Bath with shower, Central Air Heating and Cooling, Monitor with local volume control for stage audio and stage management paging systems

MAIN THEATER PRODUCTION INFORMATION

LIGHTING INVENTORY – INCLUDED IN PRODUCTION RENTAL RATE

CONSOLE (OPERATOR/PROGRAMMER CHARGES WILL APPLY)

ETC Element 60-500 Console with iRFR Remote

DIMMERS and NON-DIM CIRCUITS

96 ETC 2.4K DR20 dimmers (dimmer per circuit, 20A stage pin); 6 ETC 20AMP R20 non-dimming circuits (dimmer per circuit, 20A Edison); DMX control system with ETC Sensor+ Net Box

ADDITIONAL DMX DISTROBUTION

1 Available Universe: 5-Pin DMX run throughout stage house at deck and grid

FIXTURE INVENTORY

ETC Source 4 ERS – 50 degree.....6
ETC Source 4 ERS – 36 degree.....38
ETC Source 4 ERS – 26 degree.....16
ETC Source 4 PAR.....17
Altman 6 inch Fresnel.....10
Altman PAR 38 VWFL.....6

REPERTORY LIGHT PLOT NON-MOVABLE AND REFOCUSABLE

FOCUS

Repertory light plot will be hung and circuited per paperwork, but focus must be done by client's designer. Repertory focus can be arranged at client's expense.

STAGE

15 Areas of.....2 washes front light.....(ETC Source 4 ERS)
1 wash top light.....(Altman 6 inch Fresnel)
1 wash back light.....(ETC Source 4 PAR)
1 wash hiside light from SL.....(ETC Source 4 ERS)
1 wash hiside light from SR.....(ETC Source 4 ERS)

HOUSE

1 wash over audience (twelve (12) Altman PAR 38 VWFL)

SPECIALS

Six (6) ETC Source 4 ERS – 26 degree available to be hung at client's expense

PRODUCTION LIGHT PLOT SPECIFIC PRODUCTION HANG/FOCUS

INFORMATION

Specific light plots may be hung and circuited per client specification and at client's expense. Light plots must be submitted in CAD drawings with proper paperwork (i.e. Channel Hookup). PDF/VW/AutoCAD/LW files accepted.

MAIN THEATER PRODUCTION INFORMATION

AUDIO – INCLUDED IN PRODUCTION RENTAL RATE; OPERATOR/PROGRAMMER CHARGES MAY APPLY

CONSOLE

Behringer X32 Compact Digital Audio Console

40-Input, 25-Bus, 16 MIDAS XLR Preamps at console, 17 Motorized Faders with LCD scribble strips, 6-Channel Audio Interface for use with QLab Playback

HOUSE DIGITAL AUDIO SNAKE

Behringer S-16 Digital Audio Snake – deployable on stage per client specification

16 Remote-Controllable MIDAS XLR Preamps, 8 XLR Outputs, AES50 Networking

HOUSE ANALOG AUDIO SNAKE

27 Channel input snake (XLR) – fixed on stage locations

Twelve (12) input panel on stage MSR, twelve (12) input panel on stage USL, two(2) input panel in the grid HL, and one (1) input panel in the grid HR

MAIN PA

Two (2) FBT Verve 152 Passive Speakers

One (1) Crown XLS-500 Amplifier

AUDIO PLAYBACK (Additional programmer charges may apply for QLab)

Apple Mac Pro – 2.8 GHz Quad-core Intel Xeon, 16 GB RAM

QLab 2 & 3 Pro Audio Licenses with six (6) outputs (via X32 digital audio interface)

One (1) Single Disc CD Player

WIRELESS MICROPHONES – HANDHELD

One (1) Shure PGX4 Receiver with PGX2 Handheld Transmitter, SM58 head

Two (2) Shure PG4 Receivers with PG2 Handheld Transmitter, PG58 head

WIRELESS MICROPHONES – BODYPACK

Five (5) Shure PGXD4 Receivers w/ PGXD1 Bodypack Transmitters, WL93 elements

COMPLEX AUDIO DISTRIBUTION SYSTEM

4 Channel distribution system to direct audio throughout the theater complex

INTERCOM SYSTEMS – INCLUDED IN PRODUCTION RENTAL RATE

MAIN COMMUNICATIONS SYSTEM

One (1) Clear-Com CS-702 2-Channel Main Station with PA to both dressing rooms

Two (2) Clear-Com 2-Channel belt packs for placement per client specification

INSTALLED COM LOCATIONS

Clear-Com 2-Channel Stations at both the Light and Audio consoles in booth

FLOATING COM LOCATIONS

Dressing Rooms, Backstage, MSR, USL, FOH HL and FOH HR

STAGE MANAGEMENT PAGE MICROPHONE

Page microphone in Technical Booth patched to stage/house

MAIN THEATER PRODUCTION INFORMATION

ASSISTED LISTENING – INCLUDED IN PRODUCTION RENTAL RATE

INDUCTION LOOP ASSISTED LISTENING AUDIO SYSTEM

Oval Window Audio Satellite III Assistive Listening System
Four (4) Induction Loop Receivers with Stereo Headsets

VIDEO – AVAILABLE AT THE CLIENT'S EXPENSE

SCREENS

Da-Lite 21'x 12' main screen (freestanding; can be installed by prior arrangement)
Da-Lite 84"X84" portable tripod screen

PROJECTORS

Two (2) EPSON Powerlite 4300 (5200 lumens, 1.3 – 2.36 variable throw ratio)
One (1) BenQ MW821ST WXGA Short Throw (3000 lumens; 0.49 fixed throw ratio)
One (1) BenQ MW621ST WXGA Short Throw (3000 lumens; 0.72-0.87 variable ratio)
One (1) Optima DS326 (2600 lumens; 1.95 to 2.15 variable throw ratio)
Three (3) sets Grid hanging hardware for projectors

PROJECTOR DOWSERS

Three (3) City Theatrical DMX-controlled Projector Dowsers
Two (2) Power Supplies for City Theatrical Projector Dower (2 dowsers per PSU)

VIDEO PLAYBACK (Additional programmer charges may apply for QLab)

Apple Mac Pro – 2.8 GHz Quad-core Intel Xeon, 16 GB RAM
QLab 2 & 3 Pro Video Licenses with unlimited screen outputs
One (1) Matrox DualHead2Go (for a total of three (3) discrete video outputs)
One (1) LG Blu-ray Player
One (1) Sony Blu-ray Player

CAMERA – AVAILABLE AT THE CLIENT'S EXPENSE

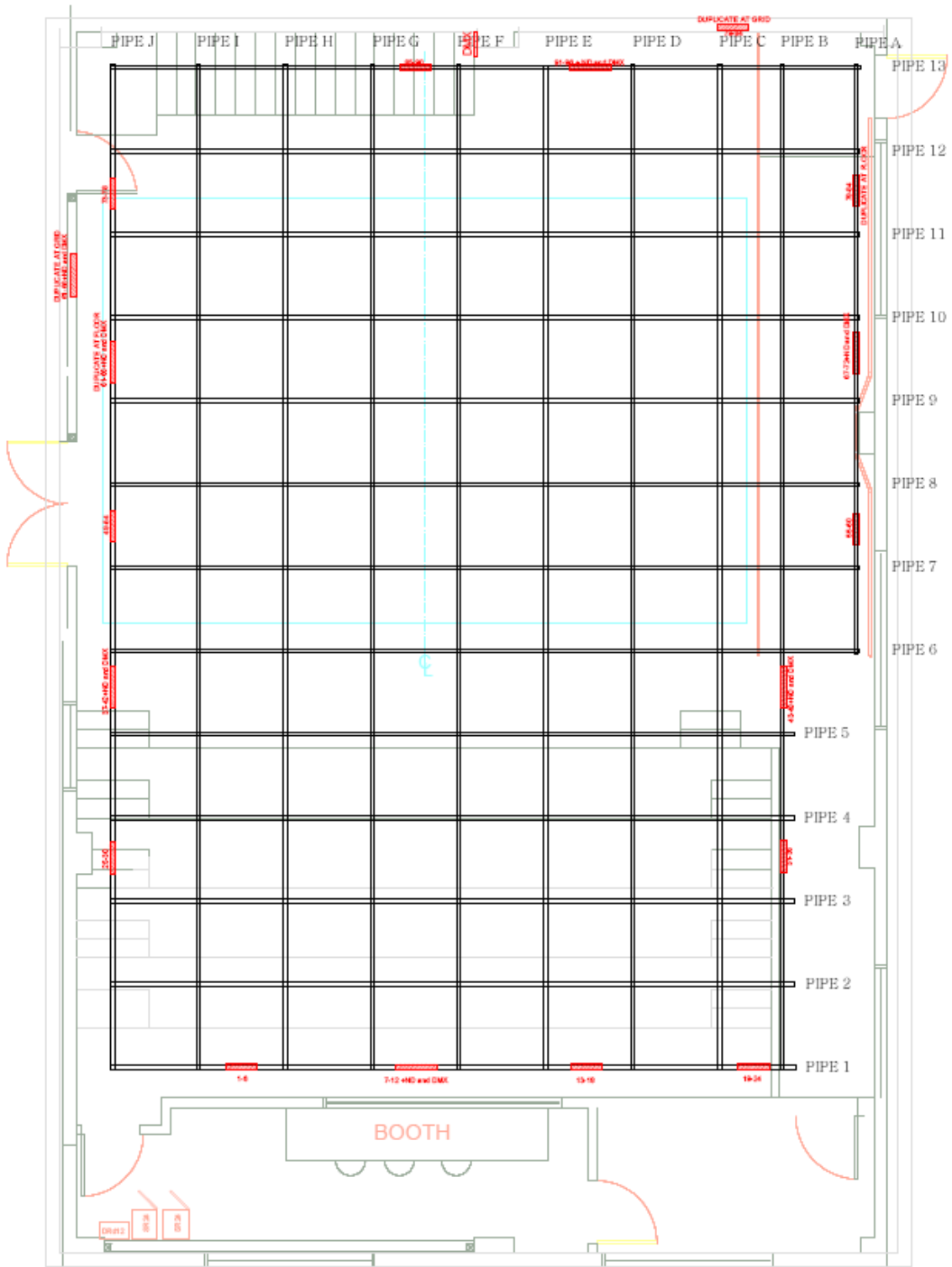
DSLR

Canon EOS 7D DSLR with 28-135mm lens with image stabilizer
Canon XH A1 HDV Camera



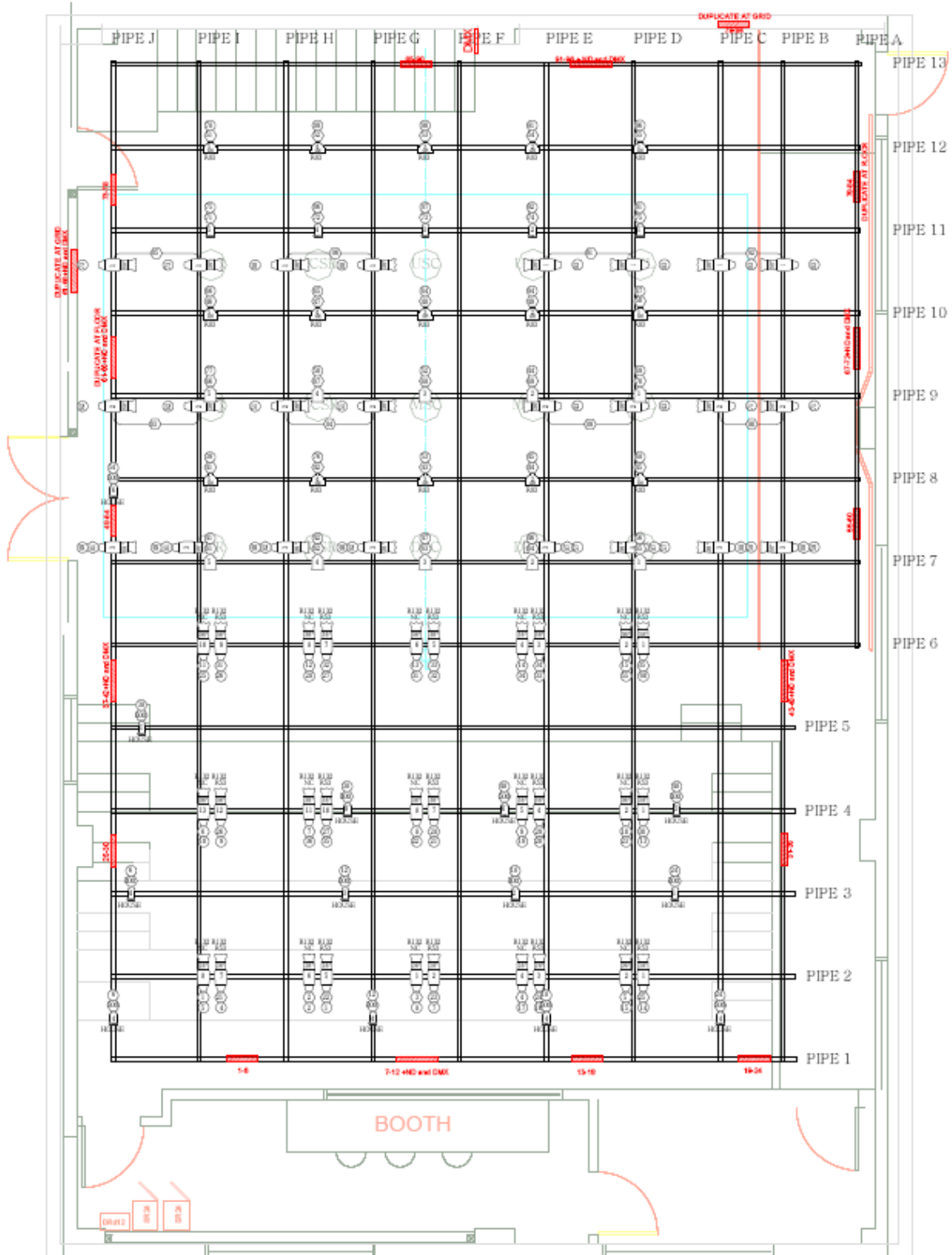
MAIN THEATER PRODUCTION INFORMATION

MAIN THEATER DEAD-HUNG GRID - TRIM 14'-6"



MAIN THEATER PRODUCTION INFORMATION

MAIN REPERTORY LIGHT PLOT – REFOCUSABLE/NON-MOVEABLE



MAIN THEATER PRODUCTION INFORMATION

MAIN THEATER REPERTORY LIGHT PLOT MAGIC SHEET

FRONT—WARM (GRP 1)

11	12	13	14	15
6	7	8	9	10
1	2	3	4	5

FRONT—COOL (GRP 21)

31	32	33	34	35
26	27	28	29	30
21	22	23	24	25

BAX—COOL (GRP 41)

51	52	53	54	55
46	47	48	49	50
41	42	43	44	45

TOP—NC (GRP 61)

71	72	73	74	75
66	67	68	69	70
61	62	63	64	65

HISIDE →—NC (GRP 81)

85	85	86	86
83	83	84	84
81	81	82	82

HISIDE ←—NC (GRP 87)

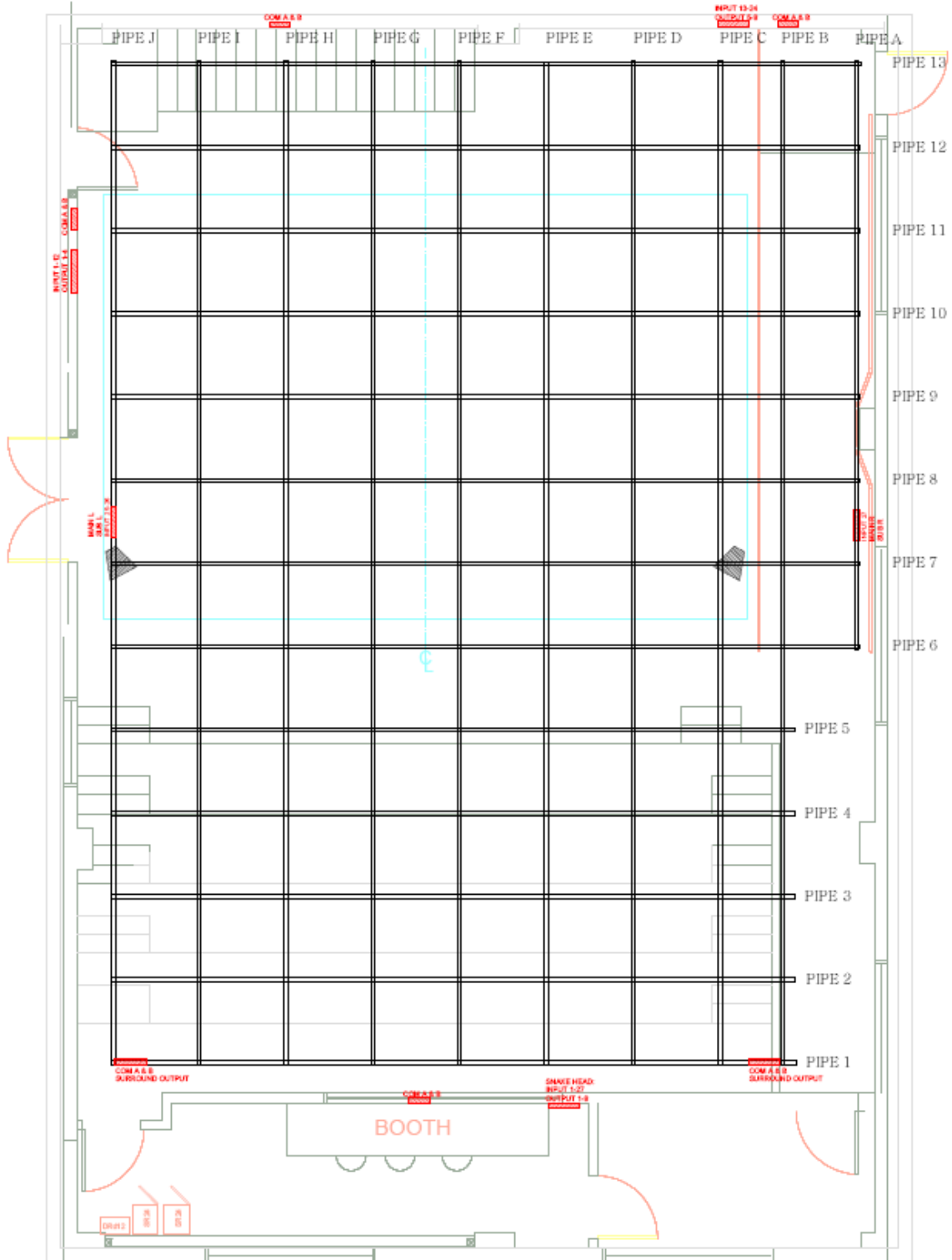
91	91	92	92
89	89	90	90
87	87	88	88

MISC CHANNELS:

HOUSELIGHTS 500

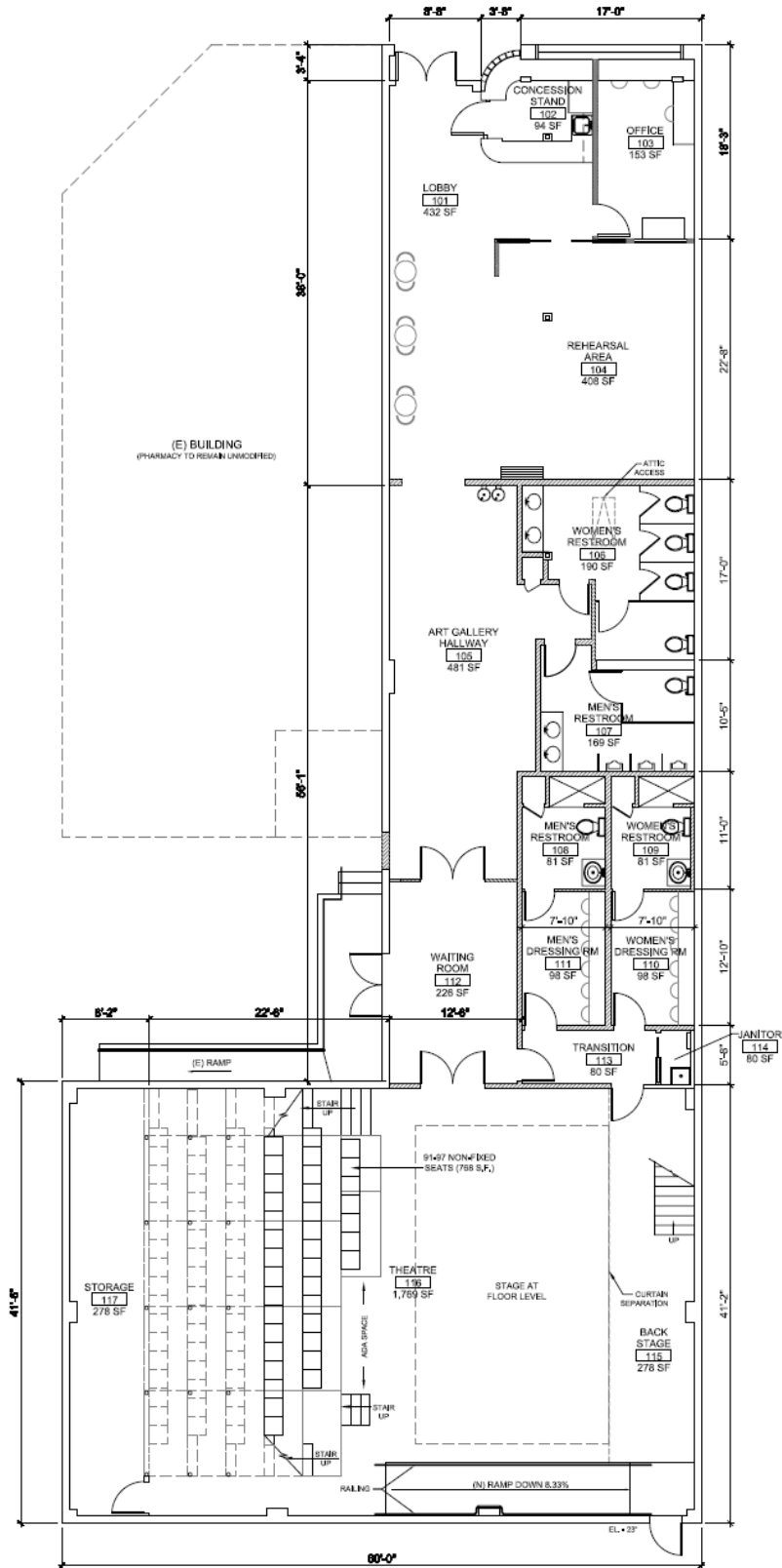
MAIN THEATER PRODUCTION INFORMATION

MAIN THEATER SOUND INPUT/OUTPUT/COM/SPEAKER PLOT



PRODUCTION INFORMATION

THEATER COMPLEX GROUNDPLAN AND DIMENSIONS





2102 EAST FIRST STREET
LOS ANGELES, CA 90033
WWW.CASA0101.ORG
323.263.7684

GUIDE PREPARED BY
SOHAIL e. NAJAFI
SPRING 2016